

# 制订主要工作说明

2018.12

**1** %

**2** %

**3** )

**4** )

**5** %\*

**1**

Q2017Q387

2017

2019

2017 6

2017 9

**2**

1 2017 5 27

Q2017Q387

2017

2 2017 6 8

3 2017 6 14

4 2017 6 16

5 2017 6 30

6 2017 9 13

1

2

3

7 2017 9 14

8 2017 10 10

2017 10

20

2017

10 31

9

2017

10 31

10 2017 11 1

2017 11 29

2017 258

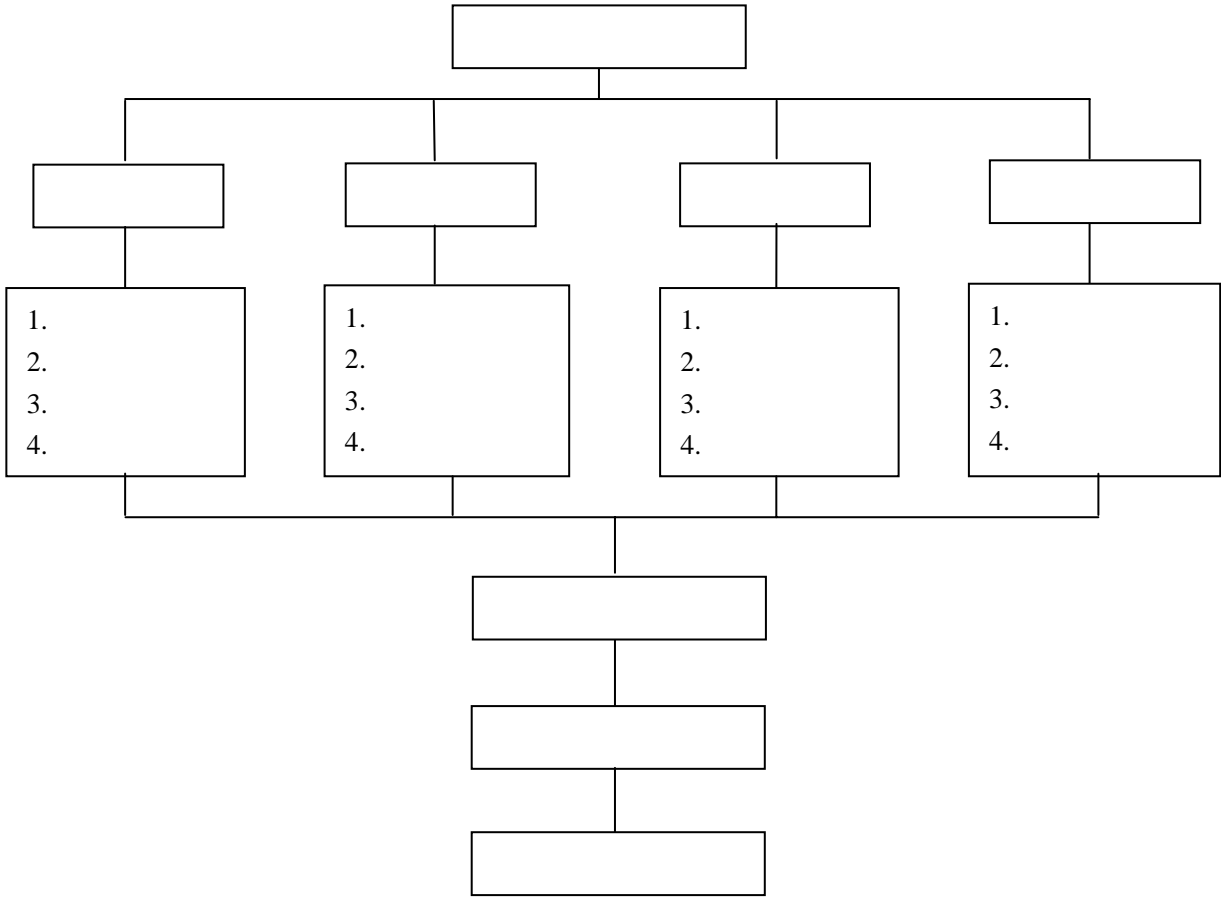
1

2

3

4

:



2017 11 2018 3 31 5 30  
2017 11 2018 9 12 2018  
10 20 2018 9 2018 10  
25

3341 894  
8  
4 7 2 6 1  
7 3 7  
11 2018 6 30

12 2018 7 2018 9

2018 10 31

13 2018 12 4

**3**

1

2

3

4

5

**4**

13

**1**

2

7

17

3

3.1

A

3.2

A

3.3

A



3.4

A

3.5

A

3.6

A

3.7

A

**4**

JTG D64-2015

4.1

BIM

4.2

B

4.3

4.4

4.5

4.6

4.7

**5**

5.1

5.2

5.3

**6**

6.1

C

6.2

6.3

TOFT

K

6.4

6.5

**7**

7.1

7.2

7.3

7.4

**8**

8.1

8.2

8.3

**9**

9.1

**L**

9.2

9.3

9.4

9.5

9.6

**10**

10.1

10.2

10.3

11.2

11.3

11.4

11.5

11.6

11.7



11.8

**12**

12.1

12.2

12.3

**13**

13.1

13.2

13.3

13.4

1

2

3

4

**5**

1

2

## BIM

4

3

4